

To: BLM Lake Havasu Field Office TMP
Attn: Project Manager
2610 Sweetwater Ave.
Lake Havasu City, AZ 86406

From: Havasu 4 Wheeler Public Lands Committee
P.O. Box 1486
Lake Havasu City, AZ 86405

Re: Public Comment Form
Comments relating to the GOAT HILL Trail

Dear Sirs,

I am opposed to Alternative C. My request is to use Map A or D with modifications.

Maps C and D cut out critical parts of one of our clubs (Havasus 4 Wheelers) popular trails, the GOAT HILL trail (**Image D**).

To start with there is a missing route that extends from the State land at approximately 34°36'13.16"N - 114°22'54.08"W north to HN050. This section is critical to this trail as it connects the start of the trail at Fathom Drive to the BLM land. The missing route is clearly visible in *Google Earth* and I have attached the **Image A** for reference. This omission is on all maps.

The next issue is HN071 which is multiple open routes with one name making it all but unusable to work with. It also contains a serious error. At 34°37'10.39"N - 114°22'3.07"W there is a cliff (see **Image B**) making HN071 impassable where the BLM shows it as a open passable route. Also HN069A and HN071A are incorrect where the correct path can easily be seen in *Google Earth* and the correct route was submitted in 2005. To repair these errors, HN071 need to follow the yellow path shown on the **Image C** and a new HN route number assigned to the purple path which is the optional obstacle for this trail. Both routes are regularly maintained and need to be open. HN069A and HN071A need to be deleted and the section on HN071 between the purple path and where the yellow path reconnects to HN071 needs to be deleted. These errors are on all maps.

This trail is one of the few that are in the northwest section of the TMP. It is one of the easier trails giving the beginner a great off-roading experience with great views of the area.

Image A

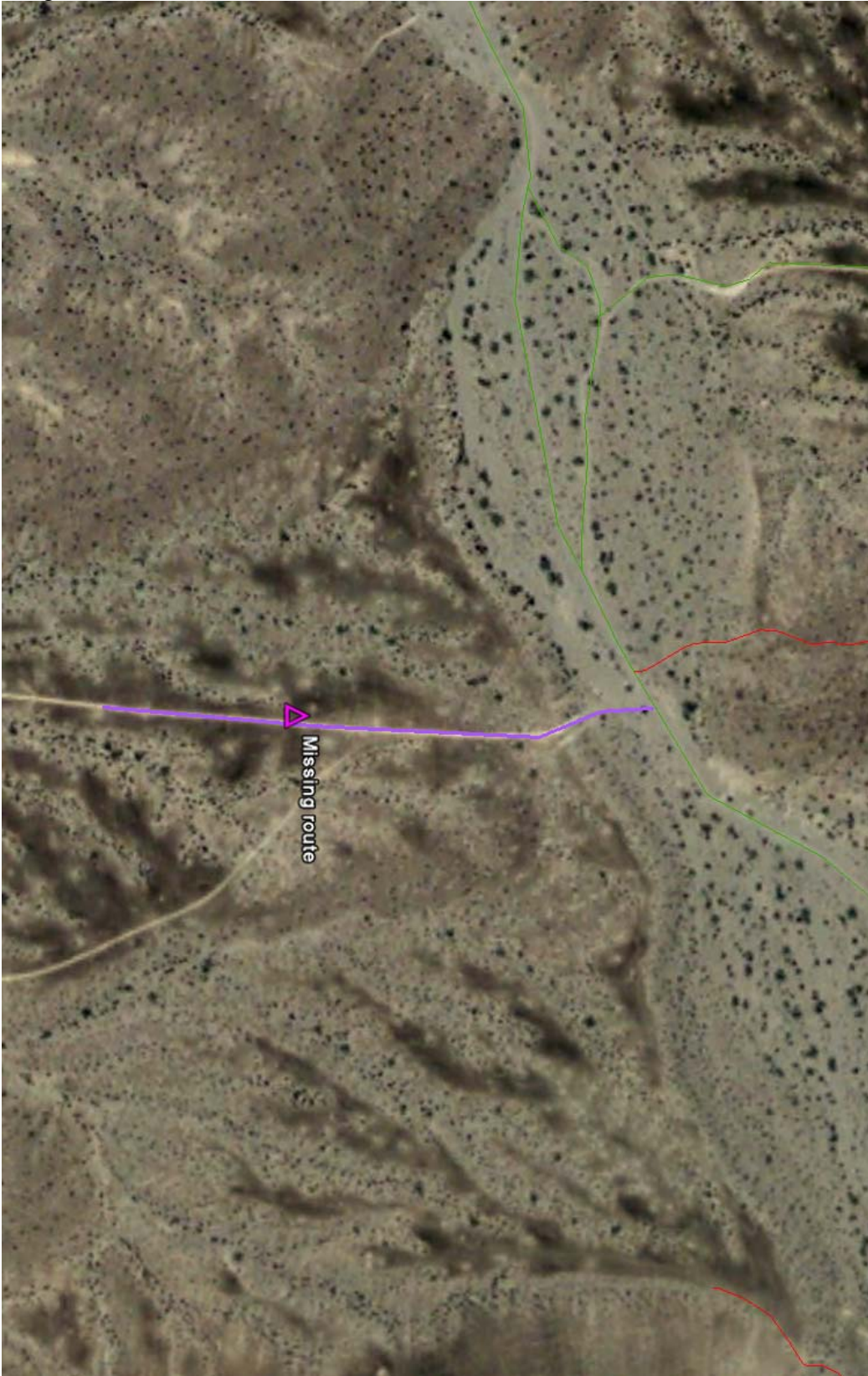


Image B (Facing east on HN071)



Image C



Image D (Goat Hill Trail in Blue)

