

September 2010

To: BLM Lake Havasu Field Office TMP  
Attn: Project Manager  
2610 Sweetwater Ave.  
Lake Havasu City, AZ 86406

From: Havasu 4 Wheeler Public Lands Committee  
P.O. Box 1486  
Lake Havasu City, AZ 86405

Re: Public Comment Form  
Comments relating to Cattail to Scenic Turnout

Dear Sirs,

**We support Map D, with some changes.**

There is a route that starts at the scenic turn out on Highway 95 south of Standard Wash (34.234755N, 114.102643W) that parallels the east side of the highway and connects with the Cattail Cove run (34.221710N, 114.082589W). This is a good quad & stock jeep run that keeps vehicles off of the dangerous highway approach. It has been used for years and is actually a power line feeder trail. It was missed from the inventory.

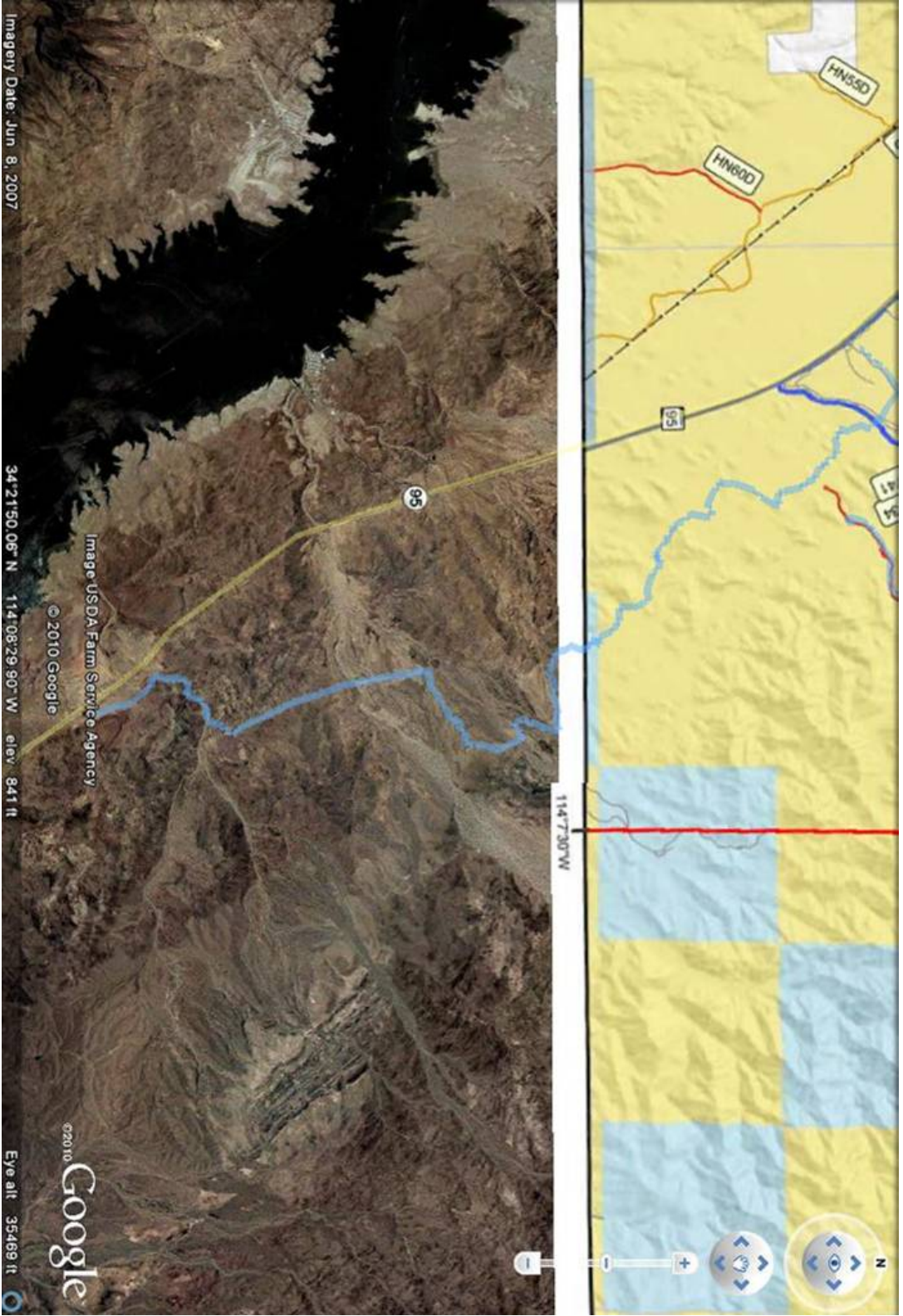


Image Date: Jun 8, 2007

Image USDA Farm Service Agency  
© 2010 Google

©2010 Google  
Eye alt 35469 ft